

Products

Components and systems

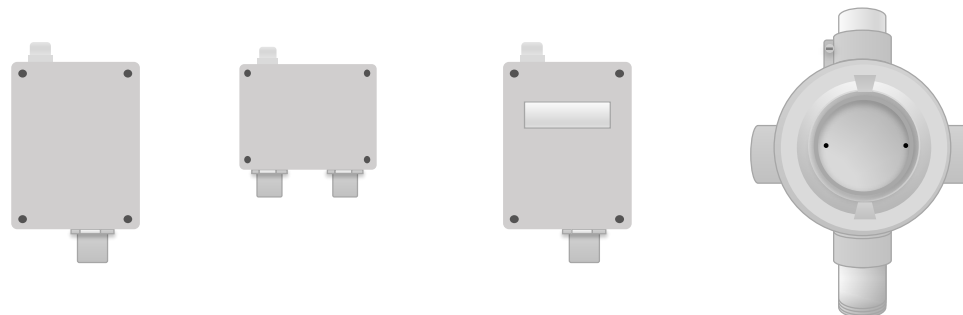
Products



Overview Products

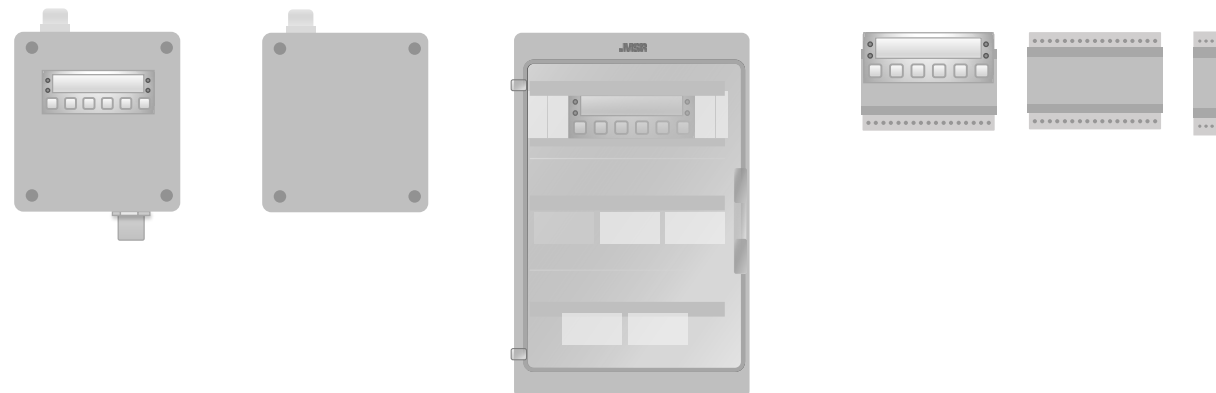
Sensors:

- µGard®2 Sensor
- PolyGard®2 Sensor
- PolyXeta®2 Sensor
(Flow Sensor)



Controller:

- Multi Sensor Controller
- Multi Gas Controller
- Digital Gas Controller
- Controller Serie XGC-80
Module

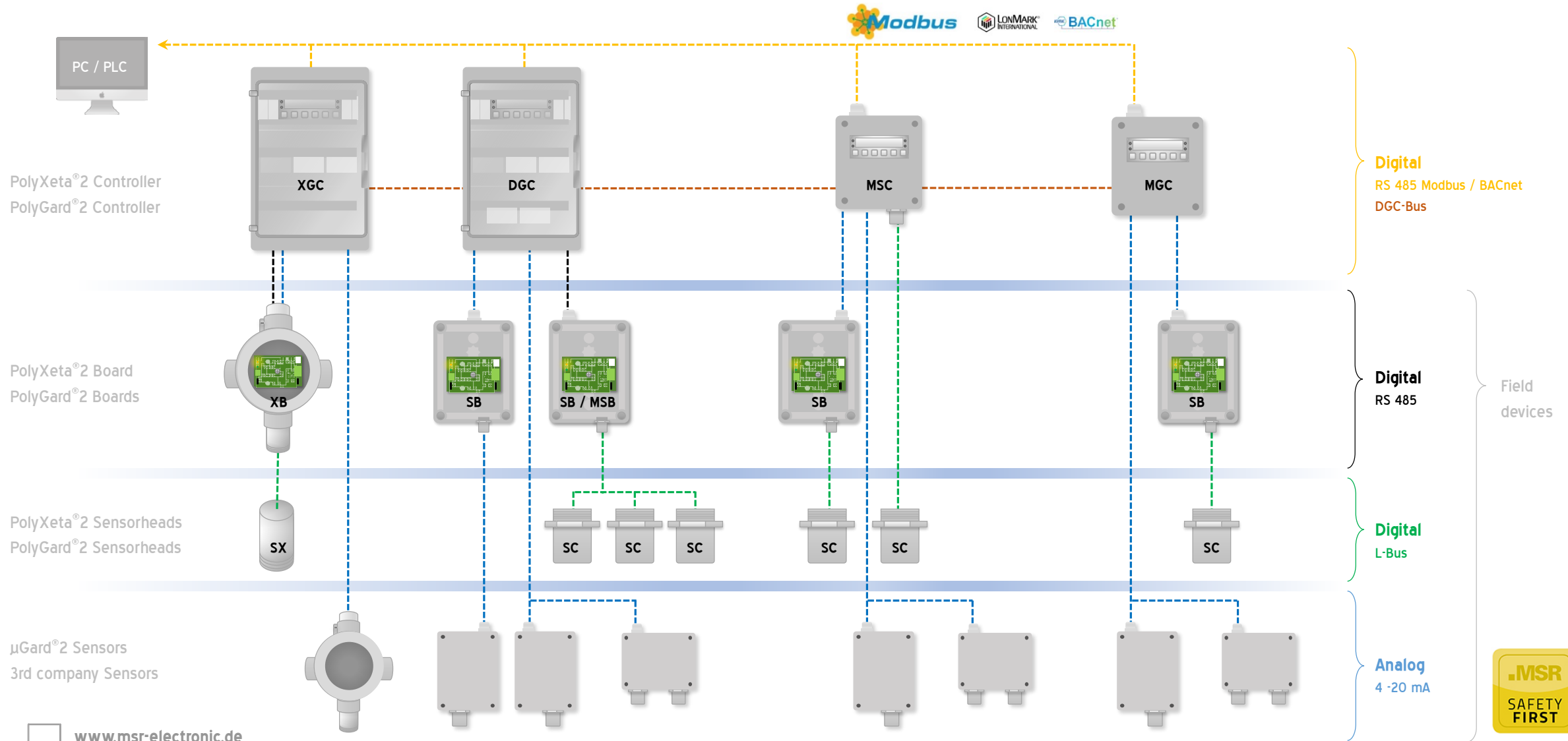


Accessories:

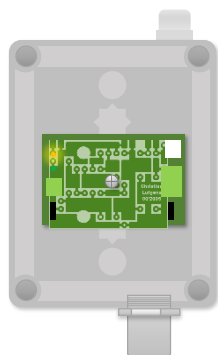
- Warning devices
- Calibration gas



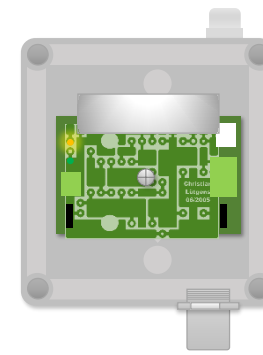
System-overview products



Gas overview buildings

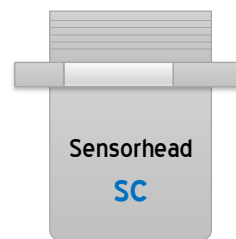


Sensorboard SB2/MSB2:
PolyGard®2 Sensor



Sensorboard MSC2:
PolyGard®2 Multi Sensor Controller

PolyGard®2



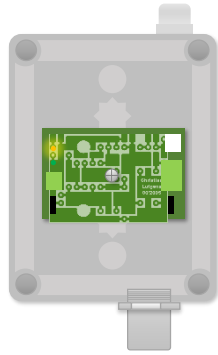
Sensorhead
SC

GARAGE
COLD
HEAT
OFFICE
LABOR
...

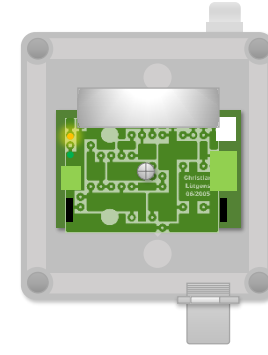
... EX C₂H₄ CH₂O CH₃Br Cl₂ ClO₂ CO CO₂ F₂ Freon H₂S HCL HCN HF LPG N₂O NH₃ NO NO₂ O₂ O₃ PH₃ SF₆ SiH₄ SO₂ VOC



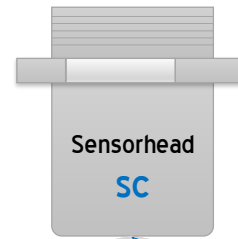
Gas overview garage



Sensorboard SB2/MSB2:
PolyGard®2 Sensor



Sensorboard MSC2:
PolyGard®2 Multi Sensor Controller



Sensorhead
SC

GARAGE

COLD

HEAT

OFFICE

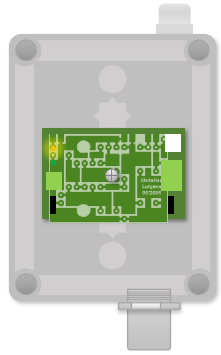
LABOR

...

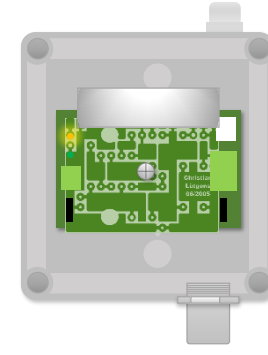
- ...
- EX
- C₂H₄
- CH₂O
- CH₃Br
- Cl₂
- ClO₂
- CO**
- CO₂
- F₂
- Freon
- H₂S
- HCL
- HCN
- HF
- LPG**
- N₂O
- NH₃
- NO**
- NO₂**
- O₂
- O₃
- PH₃
- SF₆
- SiH₄
- SO₂
- VOC



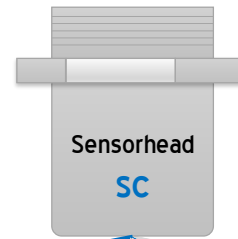
Gas overview cold



Sensorboard SB2/MSB2:
PolyGard®2 Sensor



Sensorboard MSC2:
PolyGard®2 Multi Sensor Controller



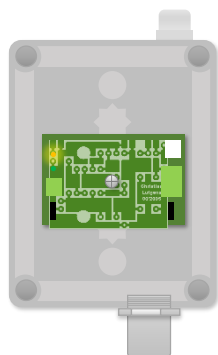
Sensorhead
SC

GARAGE
COLD
HEAT
OFFICE
LABOR
...

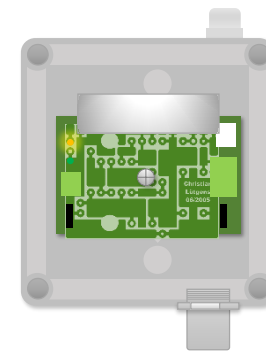
- ...
- EX**
- C₂H₄
- CH₂O
- CH₃Br
- Cl₂
- ClO₂
- CO
- CO₂**
- F₂
- Freon**
- H₂S
- HCL
- HCN
- HF
- LPG
- N₂O
- NH₃**
- NO
- NO₂
- O₂
- O₃
- PH₃
- SF₆
- SiH₄
- SO₂
- VOC



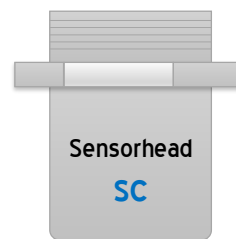
Gas overview heating



Sensorboard SB2/MSB2:
PolyGard®2 Sensor



Sensorboard MSC2:
PolyGard®2 Multi Sensor Controller



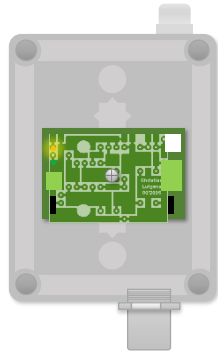
Sensorhead
SC

GARAGE
COLD
HEAT
OFFICE
LABOR
...

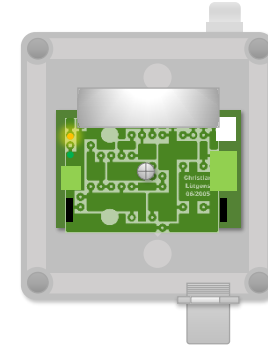
... **EX** C₂H₄ CH₂O CH₃Br Cl₂ ClO₂ CO CO₂ F₂ Freon H₂S HCL HCN HF LPG N₂O NH₃ NO NO₂ O₂ O₃ PH₃ SF₆ SiH₄ SO₂ VOC



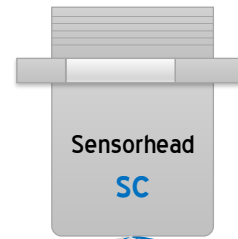
Gas overview office



Sensorboard SB2/MSB2:
PolyGard®2 Sensor



Sensorboard MSC2:
PolyGard®2 Multi Sensor Controller



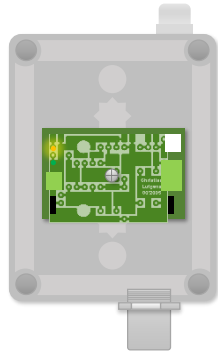
Sensorhead
SC

GARAGE
COLD
HEAT
OFFICE
LABOR
...

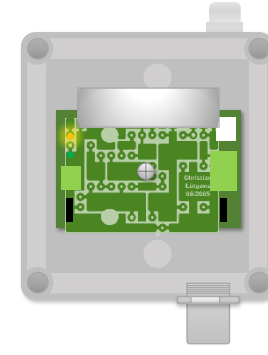
- ...
- EX
- C₂H₄
- CH₂O
- CH₃Br
- Cl₂
- ClO₂
- CO
- CO₂**
- F₂
- Freon
- H₂S
- HCL
- HCN
- HF
- LPG
- N₂O
- NH₃
- NO
- NO₂
- O₂**
- O₃
- PH₃
- SF₆
- SiH₄
- SO₂
- VOC**



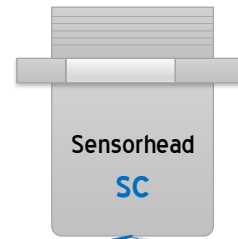
Gas overview labor



Sensorboard SB2/MSB2:
PolyGard®2 Sensor



Sensorboard MSC2:
PolyGard®2 Multi Sensor Controller



Sensorhead
SC

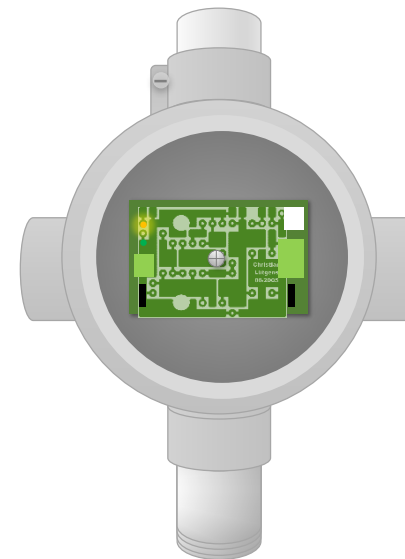
GARAGE
COLD
HEAT
OFFICE
LABOR
...

- ...
- EX**
- C₂H₄
- CH₂O
- CH₃Br
- Cl₂
- ClO₂
- CO
- CO₂**
- F₂
- Freon
- H₂S
- HCL
- HCN
- HF
- LPG
- N₂O
- NH₃
- NO
- NO₂
- O₂**
- O₃
- PH₃
- SF₆
- SiH₄
- SO₂
- VOC



Gas overview **industry**

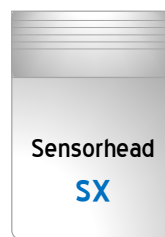
Sensorboard XB:
PolyXeta®2 Sensor



PolyXeta®2

BIOGAS

...

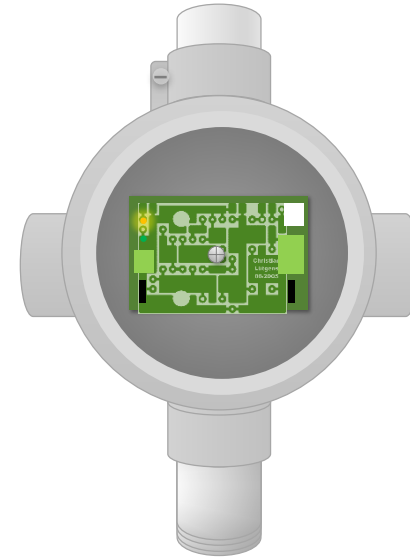


... EX C₂H₄ CH₂O CH₃Br Cl₂ ClO₂ CO CO₂ F₂ Freon H₂S HCL HCN HF LPG N₂O NH₃ NO NO₂ O₂ O₃ PH₃ SF₆ SiH₄ SO₂ VOC



Gas overview **biogas**

Sensorboard XB:
PolyXeta®2 Sensor



BIOGAS

...

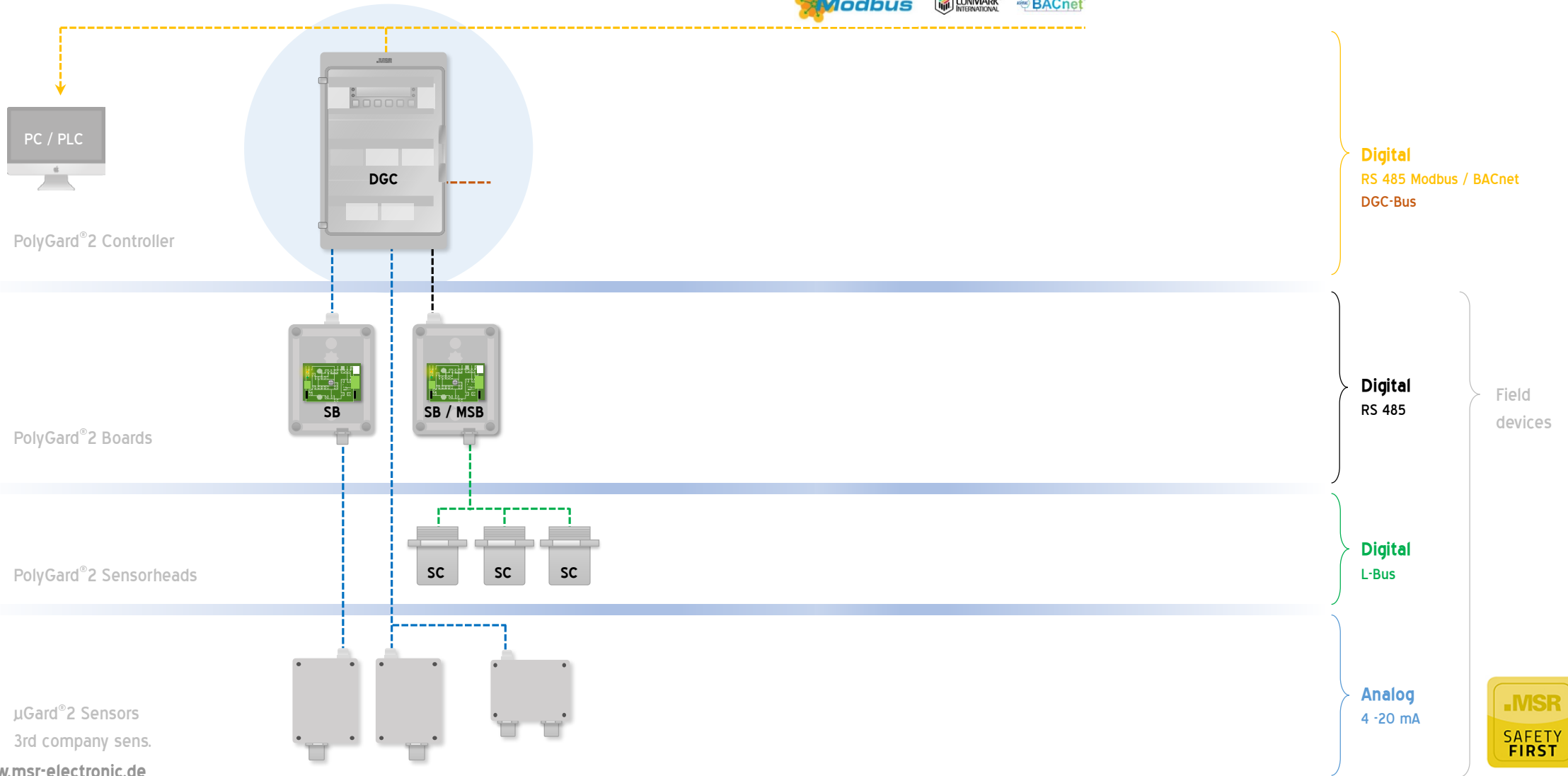
PolyXeta®2



- ...
- EX**
- C₂H₄
- CH₂O
- CH₃Br
- Cl₂
- ClO₂
- CO
- CO₂**
- F₂
- Freon
- H₂S**
- HCL
- HCN
- HF
- LPG
- N₂O
- NH₃
- NO
- NO₂
- O₂**
- O₃
- PH₃
- SF₆
- SiH₄
- SO₂
- VOC



System DGC



PolyGard®2 Controller

PolyGard®2 Boards

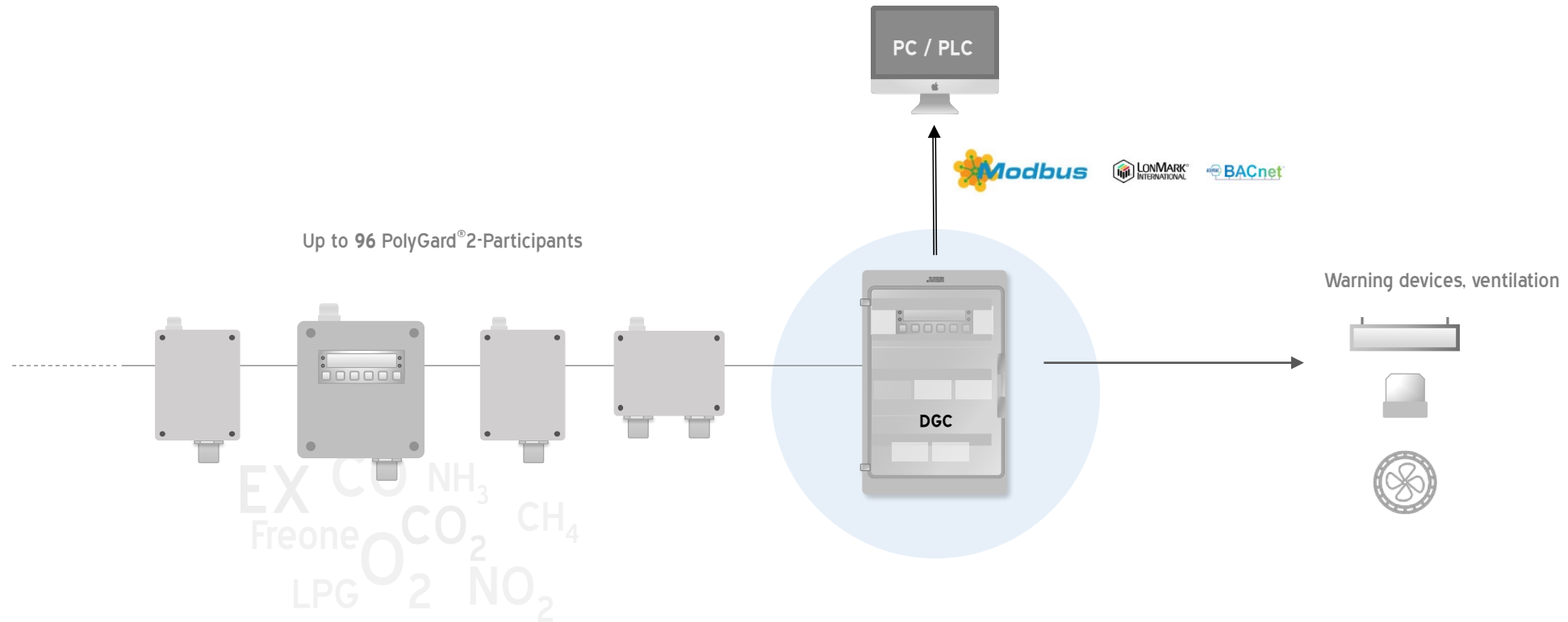
PolyGard®2 Sensorheads

μGard®2 Sensors
3rd company sens.

www.msr-electronic.de



System DGC



PolyGard®2 Controller components



Controller housing IP 65

Maximum system expansion per controller:

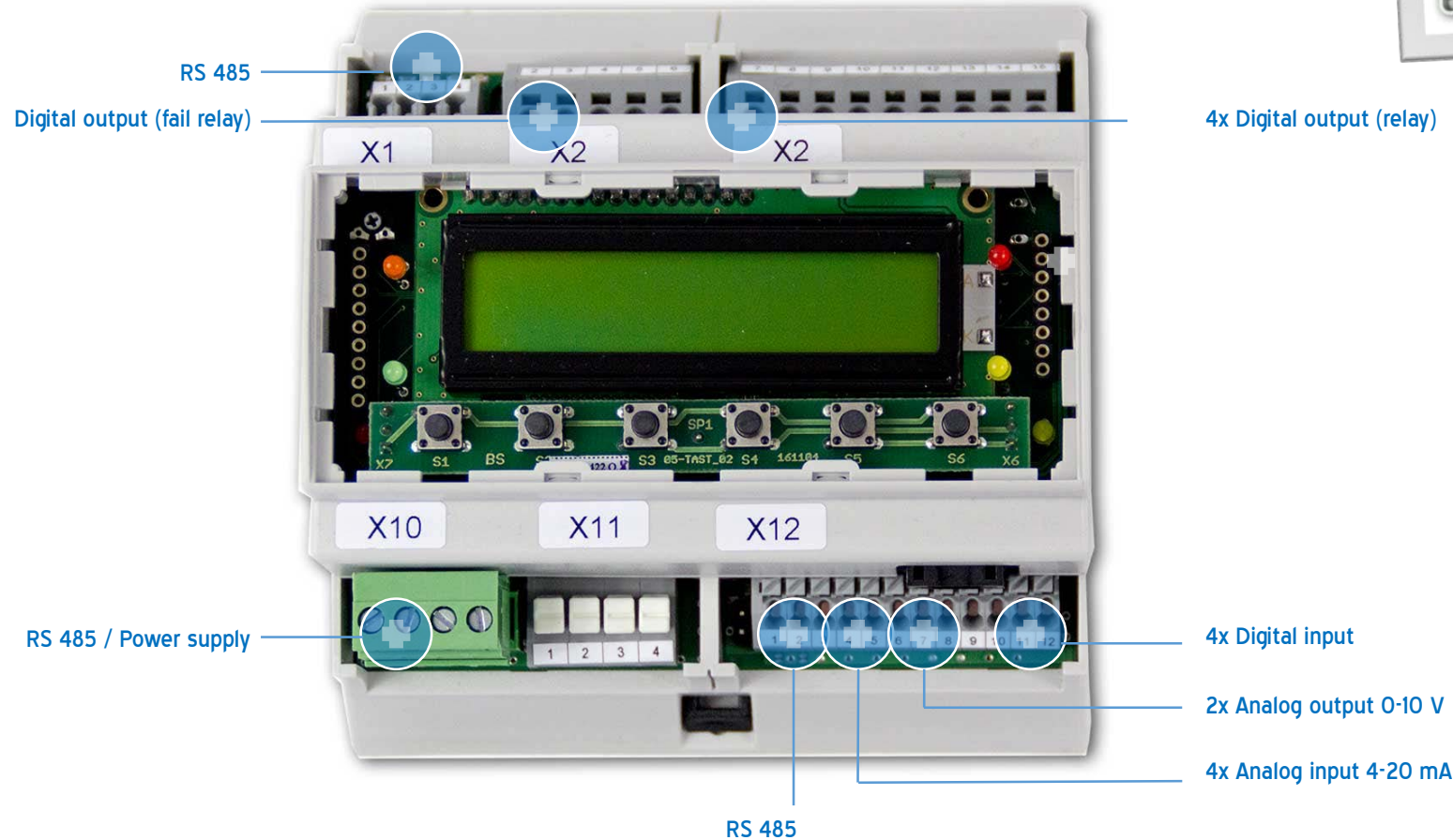
- 96 digital sensors (RS 485)
- 32 analog sensor (4-20 mA)
- 4 digital inputs (option 32 PCs.)
- 2 analog outputs 0-10 V (option 16 PCs.)
- 32 relays output pot.free 230 V / 5 A



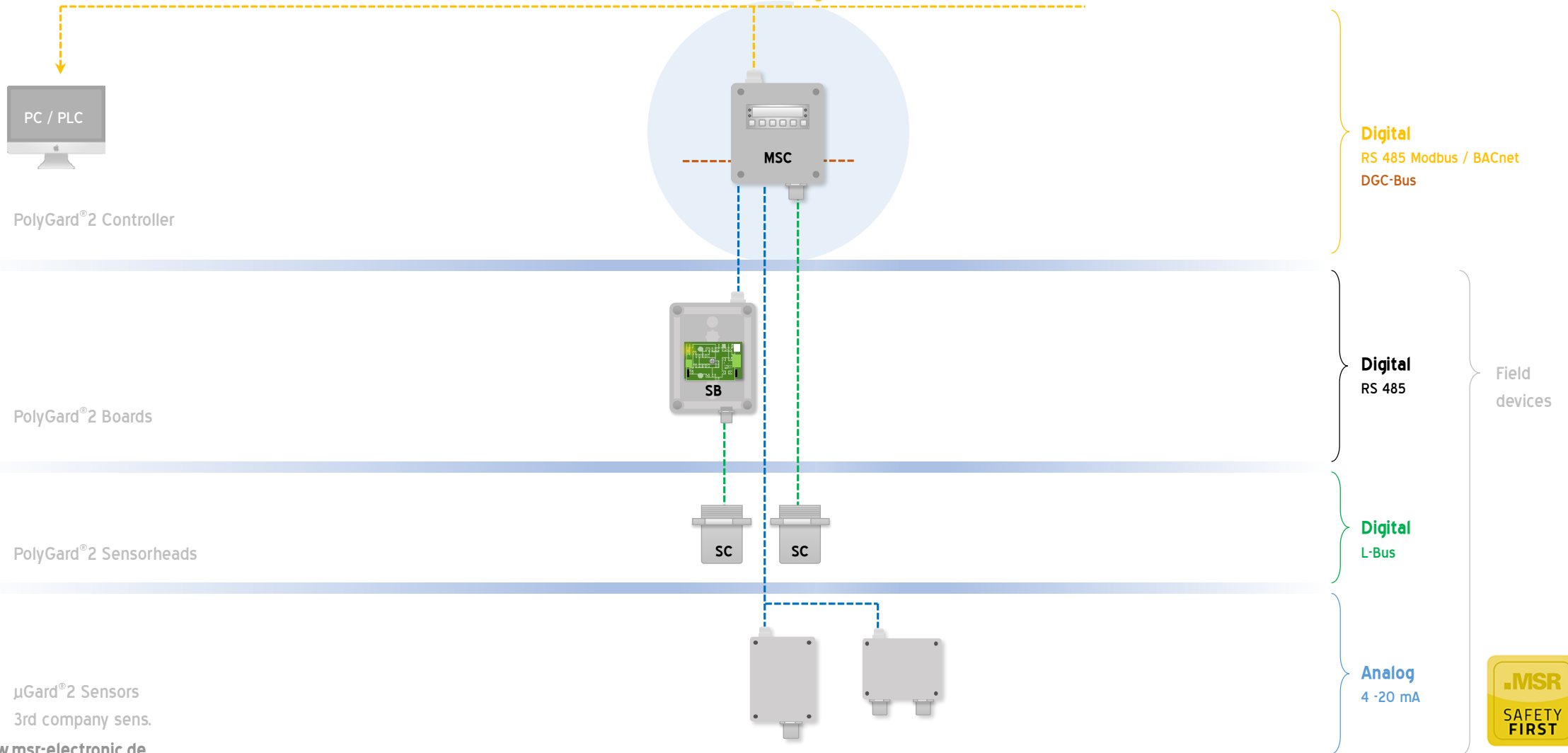
GC Modul with display and keyboard

EP Module

PolyGard[®]2 GC-Modul components



System MSC

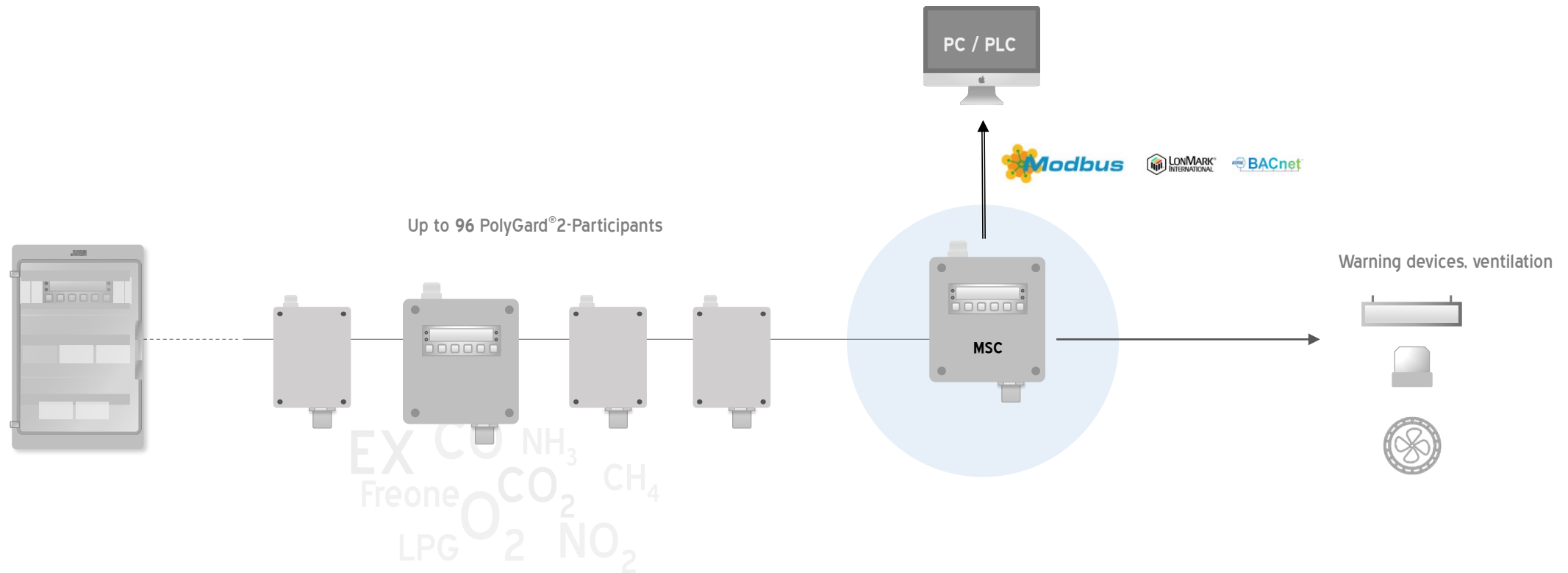


µGard®2 Sensors
3rd company sens.

www.msr-electronic.de



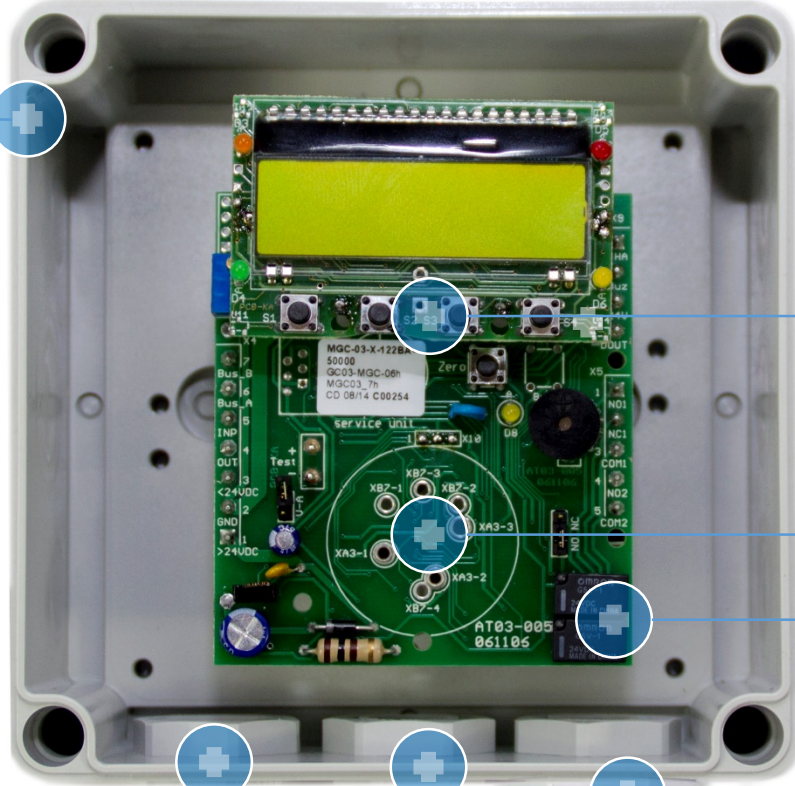
System MSC



PolyGard[®]2 MSC components



Sensor board housing IP 65



Keyboard display



Interface RS 485



relay 230 V / 5 A (max. 3 pcs.)



Exchange Sensor head X-Change (max. 2 pcs.)



Analog input 4-20 mA (max. 2 pcs.)



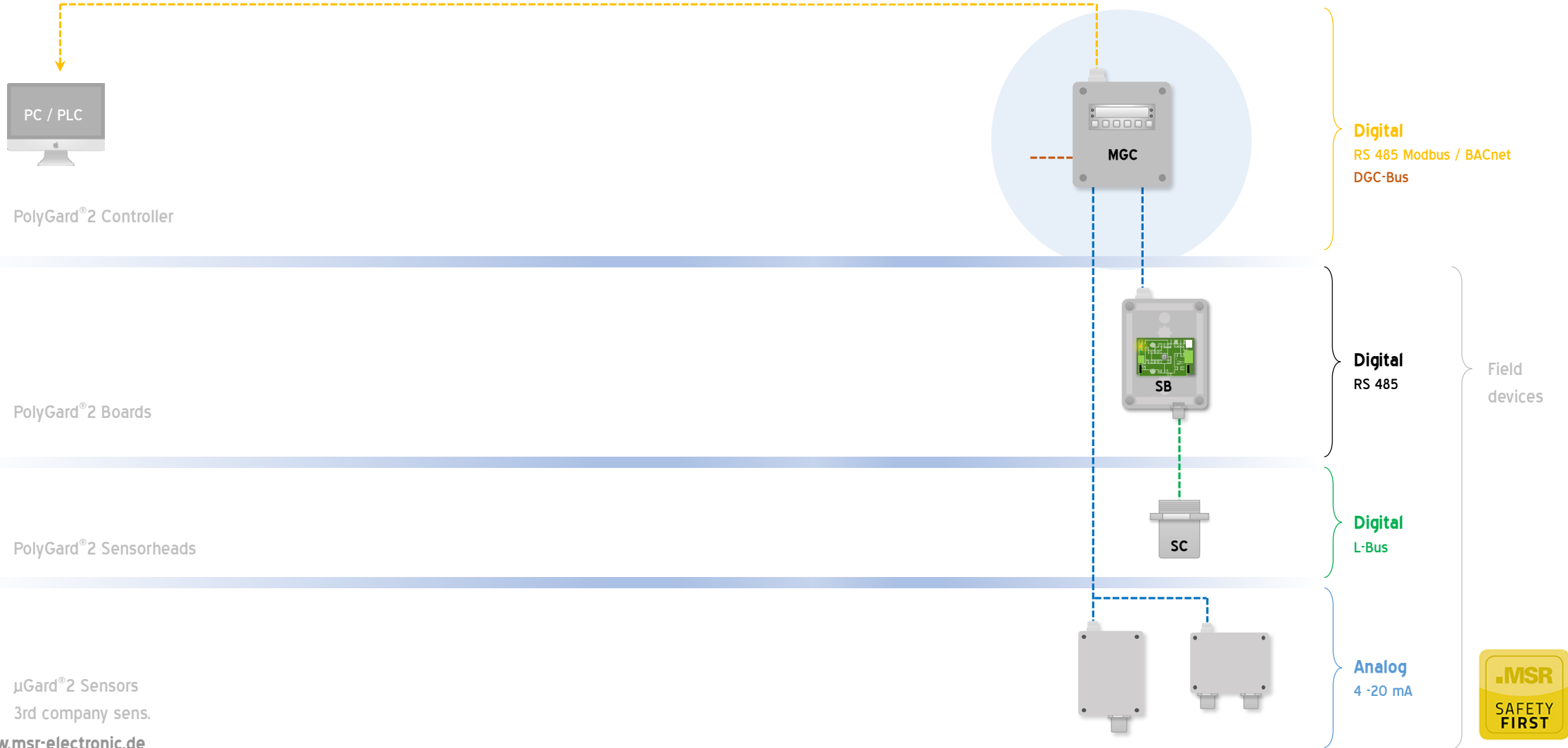
Power supply 90 - 230 V / 24 V / 12 V



Sensor head housing IP 65



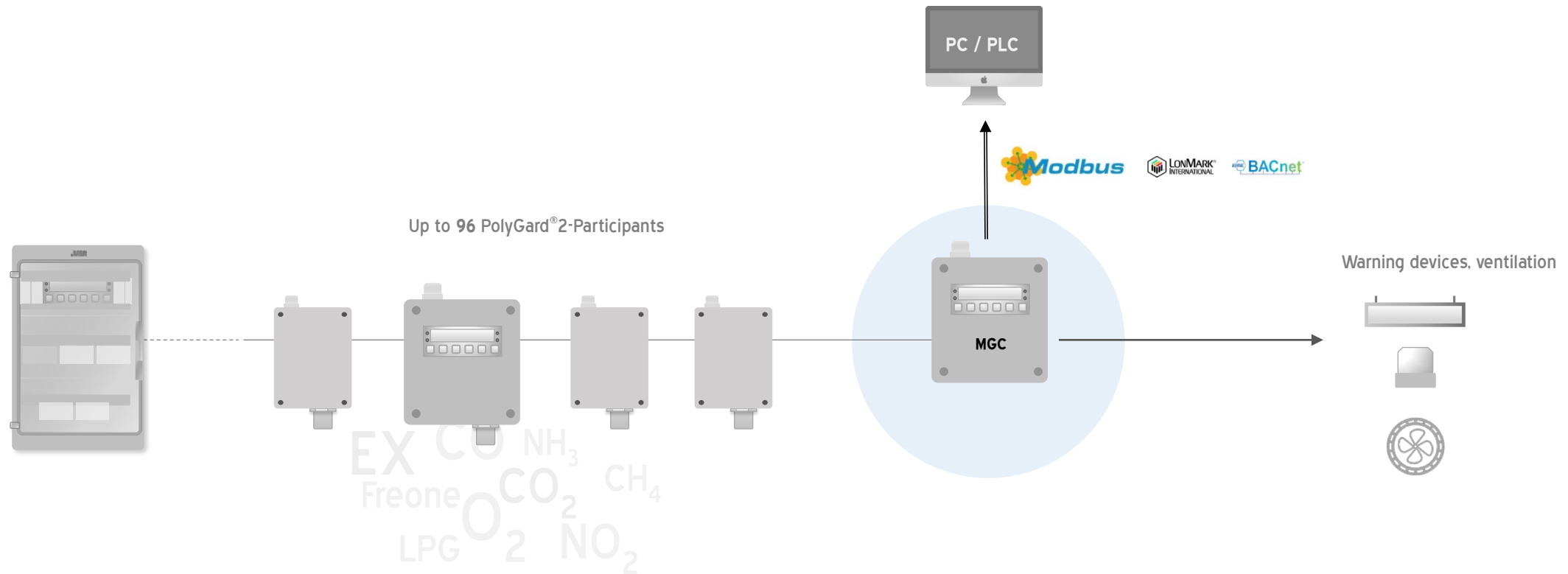
System MGC



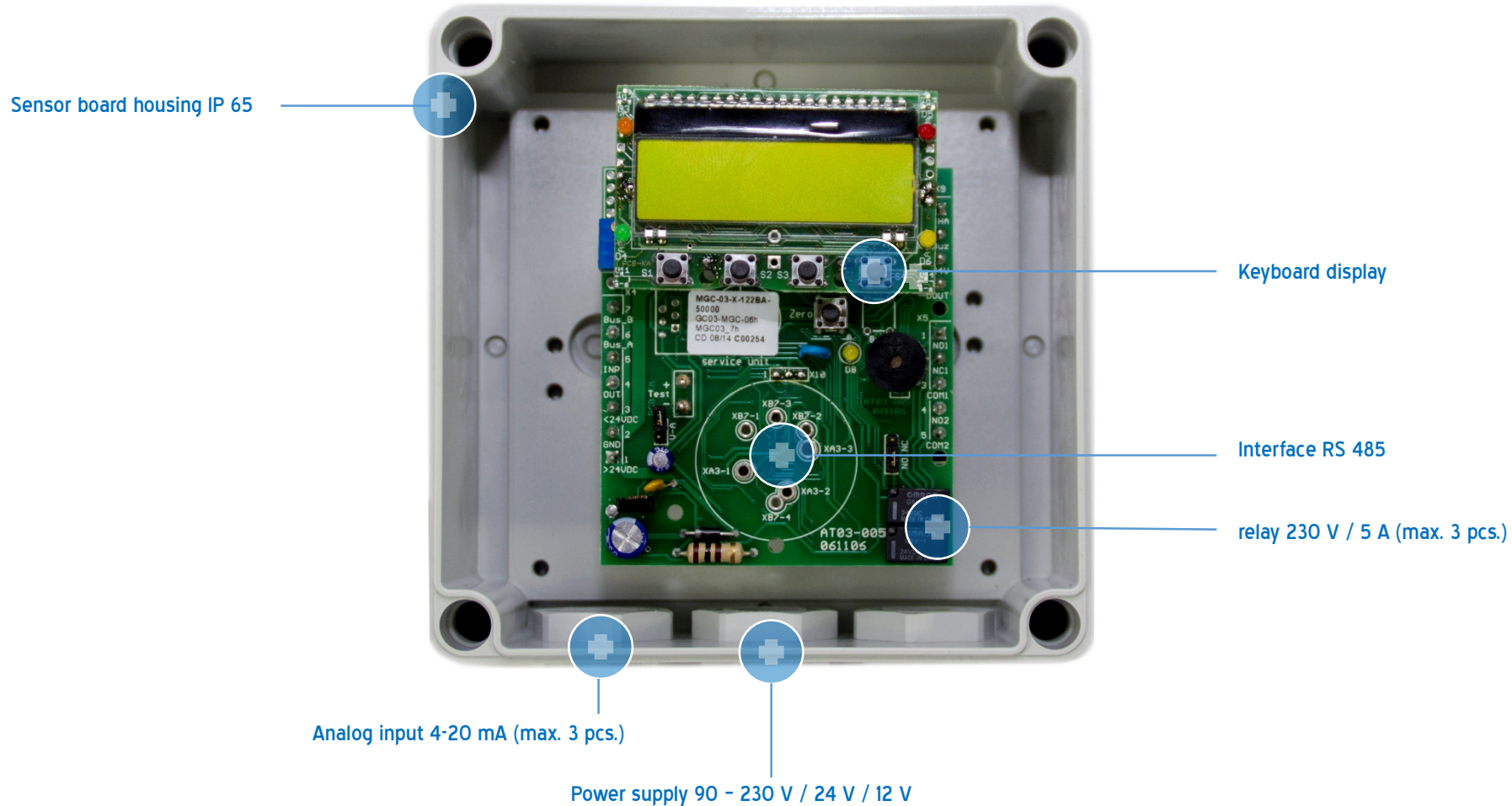
µGard®2 Sensors
3rd company sens.



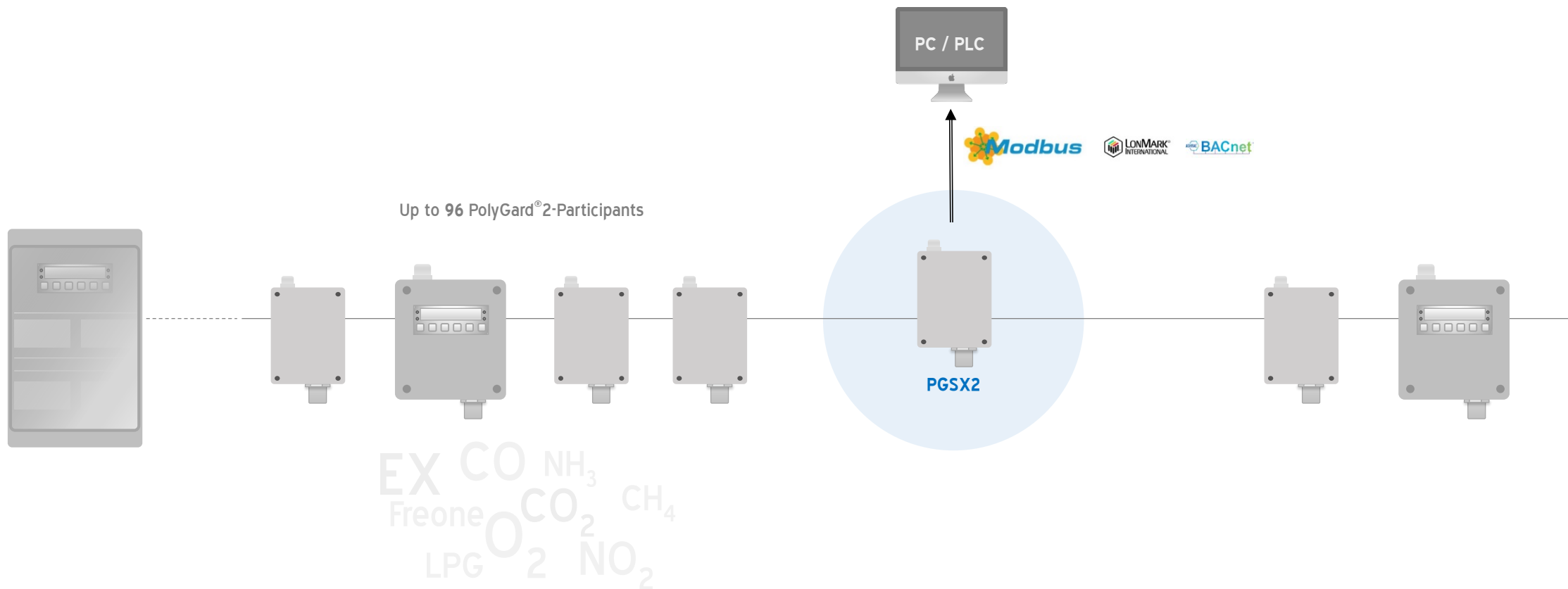
System MGC



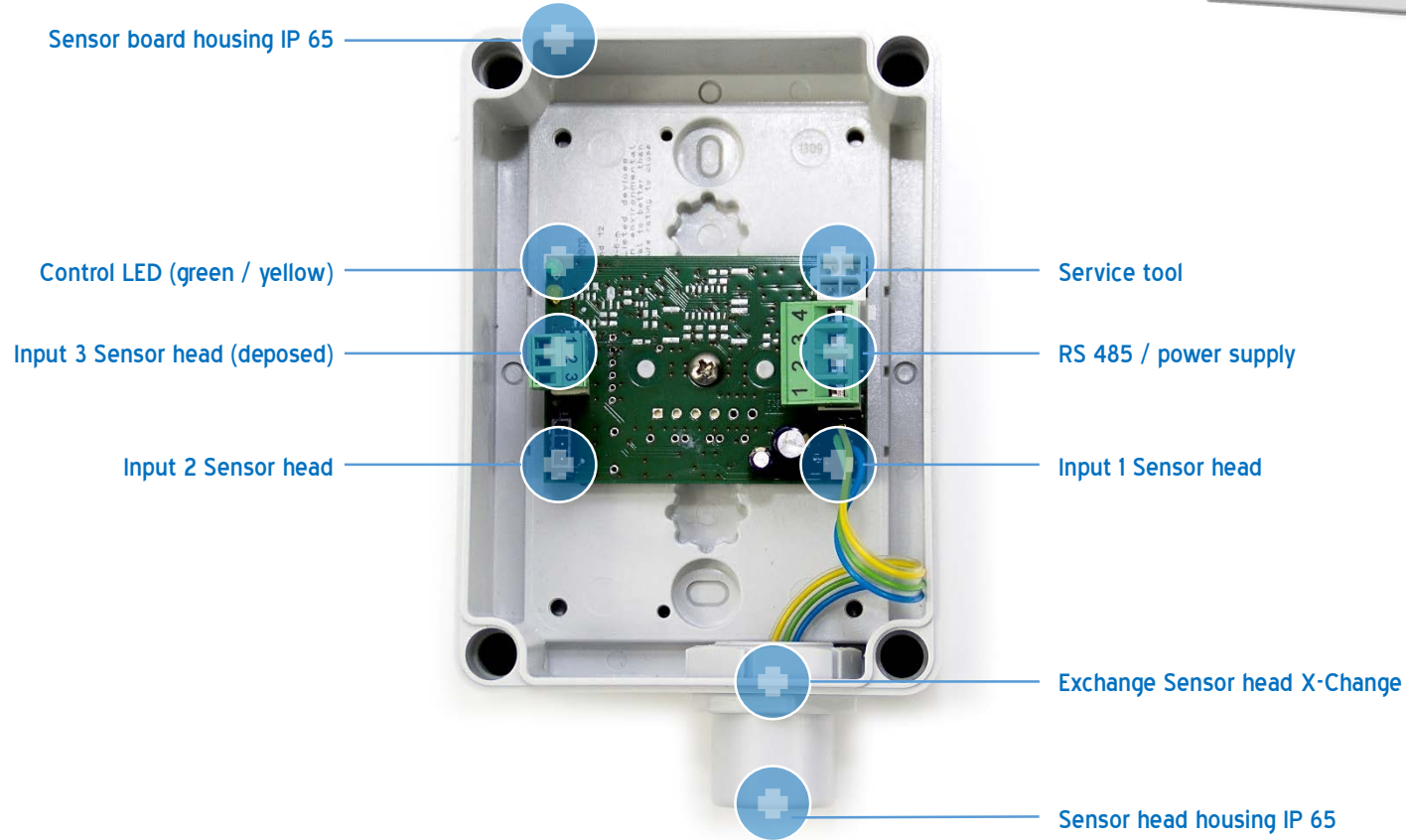
PolyGard®2 MGC components



System PolyGard[®]2 Sensor



PolyGard[®]2 Sensor components



PolyGard®2 Sensor components



Sensor board housing IP 65

Control LED (green, yellow)

Input 3 Sensor head

Input 2 Sensor head

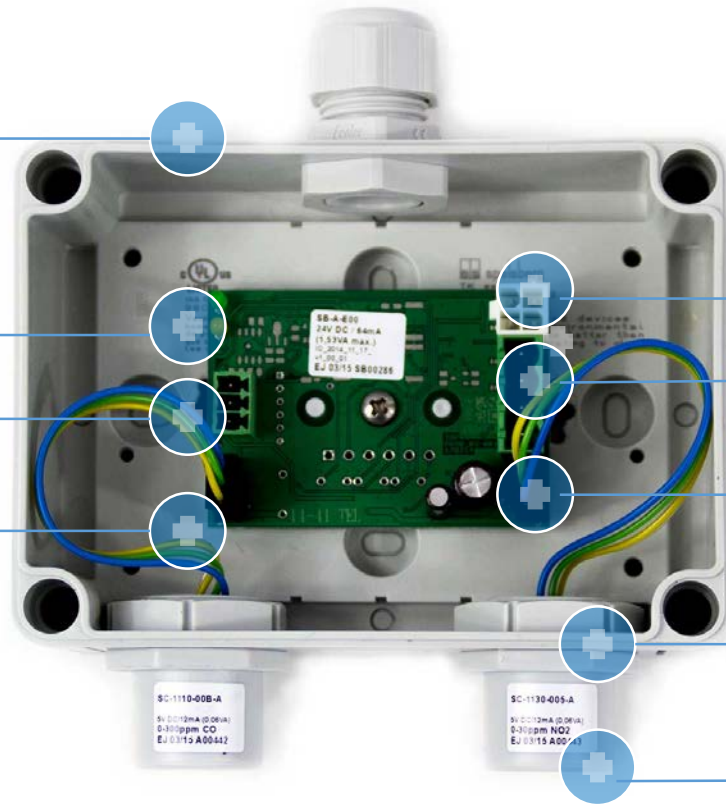
Input power

Input power

Input 1 Sensor head

Exchange Sensor head X-Change

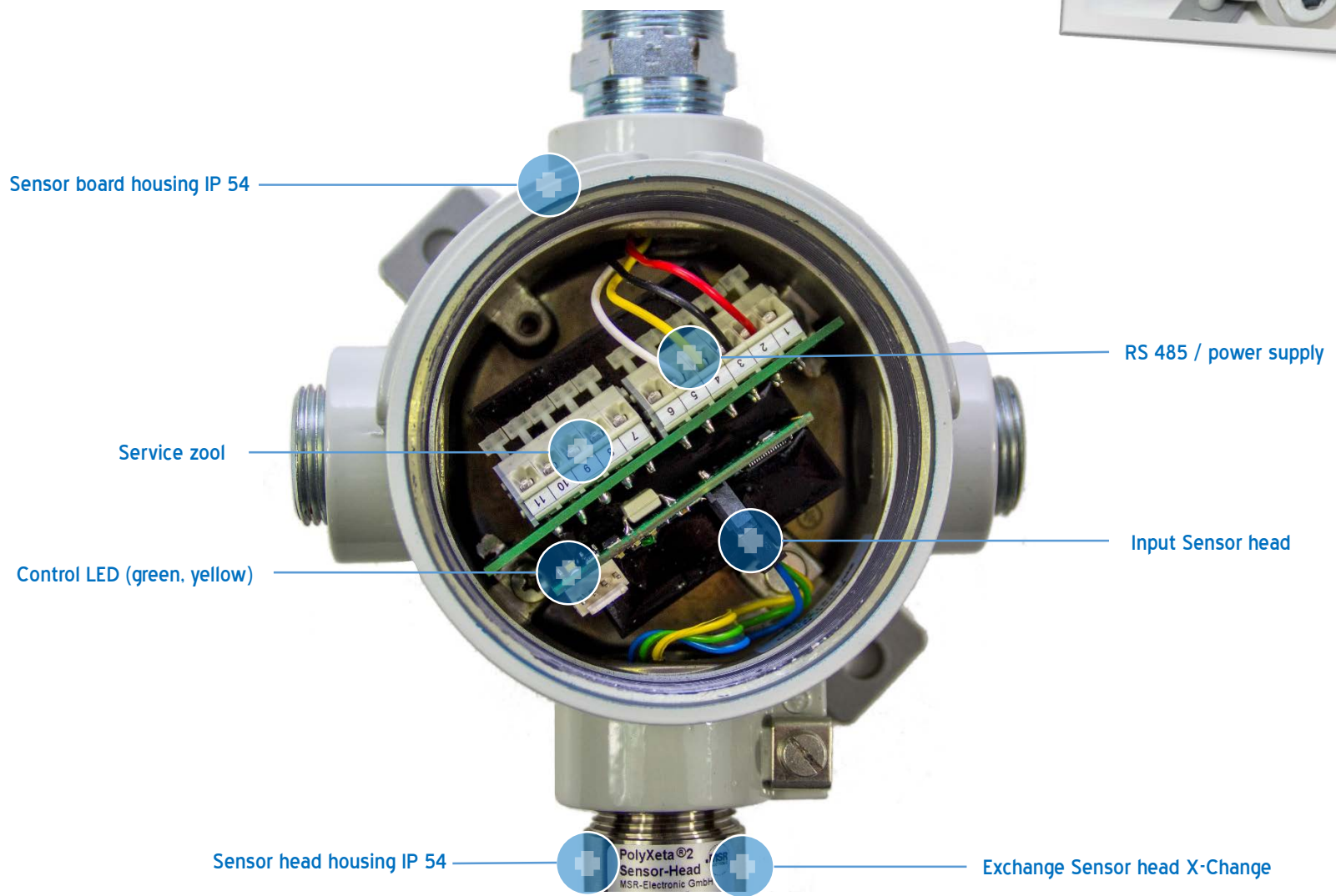
Sensor head housing IP 65



SC-1110-008-A
5V 0.012mA (0.06V)
0-300ppm CO
EU 0315 A00442

SC-1130-005-A
5V 0.012mA (0.06V)
0-30ppm NO2
EU 0315 A00442

PolyXeta®2 Sensor components

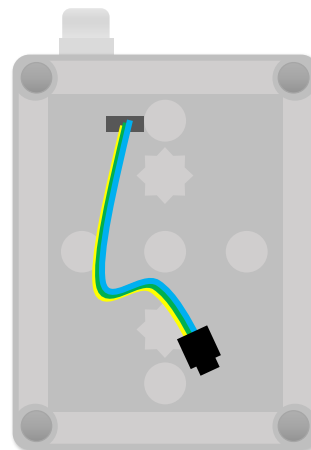


μGard®2 Sensor components

Sensor head SC2 X-Change



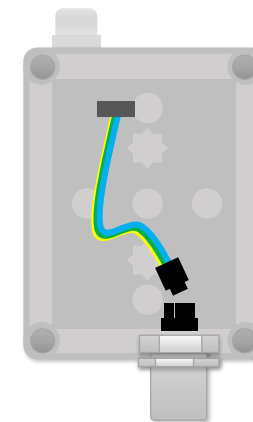
housing



Features:
Output 4 - 20 mA

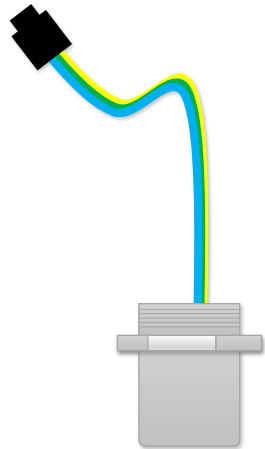


μGard®2 Sensor

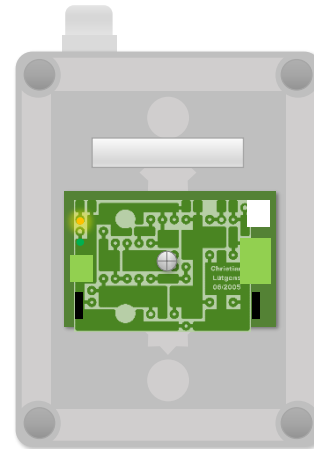


PolyGard®2 Sensor components

Sensor head SC2 X-Change



Housing + Sensor board SB2 / MSB2



Features:

Output interface RS485

Options:

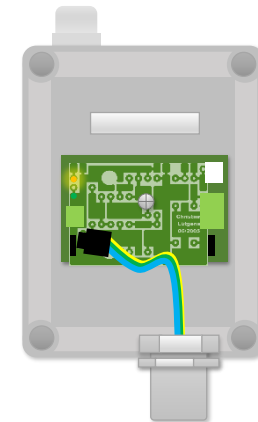
4 - 20 A

max. 3 relays

Display

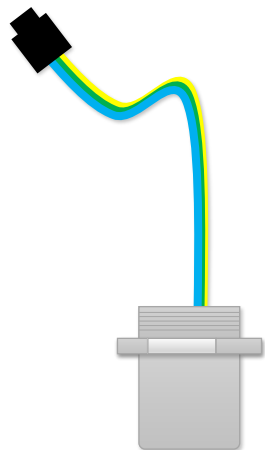


PolyGard®2 Sensor

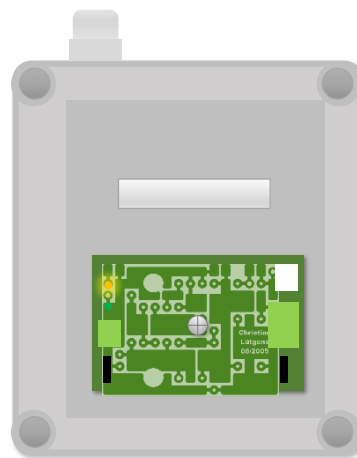


PolyGard®2 MSC components

Sensor head SC2 X-Change



Gehäuse + Sensorboard MSC2



Features:

Output interface RS485

Options:

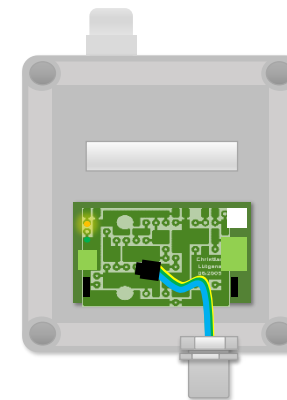
4 - 20 A

max. 3 relays

Display, keyboard

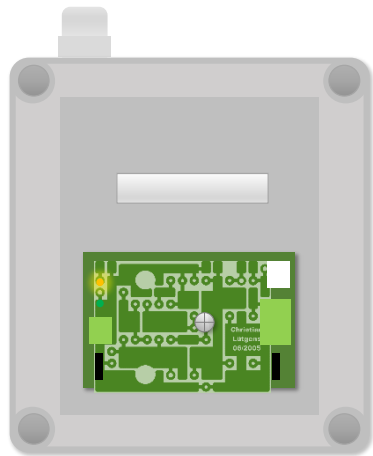
⚡ Power supplies 90 - 240 V / 24 V / 12 V

Multi Sensor Controller (MSC 2)



PolyGard®2 MGC components

Gehäuse + Sensorboard MSC2



Features:

Output interface RS485

Input 3x 4-20 mA

Options:

4 - 20 A

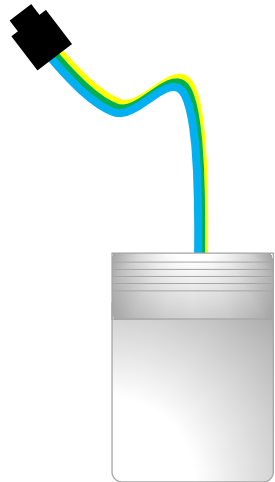
max. 3 Relays

Display, keyboard

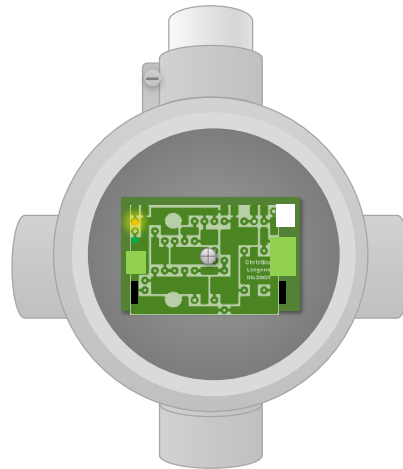
⚡ Power supplies 90 - 240 V / 24 / 12 V

PolyXeta®2 Sensor components

Sensor head SX2 X-Change



Housing + Sensor board



Features:

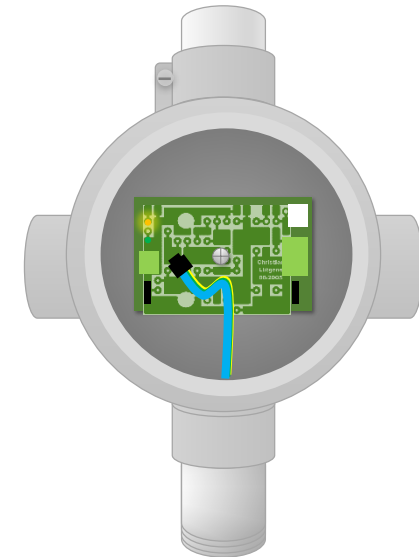
Output interface RS485
4 - 20 mA

Options:

max. 2 Relays
Display



PolyXeta®2 Sensor



MSR-Electronic GmbH

Dipl.-Ing. Wolfgang Schmitt

Würdingerstr. 27 + 27A
D 94060 Pocking

Tel.: 085 31 9004 - 0
Mail: info@msr-electronic.de

www.msr-electronic.de



Pocking